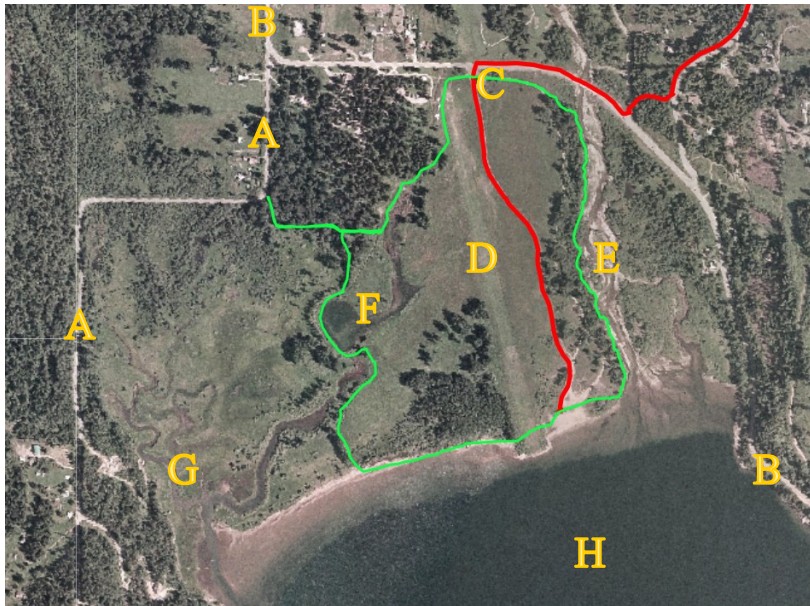


Crawford Bay Wetlands Map



- A—Peters Road
- B—Highway 3A to Creston (south) and Kootenay Bay (north)
- C—Parking area
- D—Air Strip—do not walk here when aircraft are attempting landing or takeoff
- E—Crawford Creek
- F—Beaver Pond
- G—Beaver Creek
- H—Crawford Bay
- Green and Red Lines**—walking trails

This pamphlet is sponsored by the Kootenay Lake Chamber of Commerce, RDCK Area A , and Kokanee Springs Golf Resort.

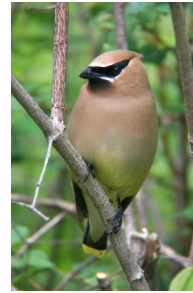
We are grateful to Kokanee Springs Resort for allowing access to private land in this area, and to Kokanee Chalets for continuing upkeep.

Photo Credits: John Smith and Lorna Robin

Cedar Waxwing, Sharp-Shinned Hawk, Bald Eagle

Map: courtesy of East Shore Trail and Biking Association (ESTBA)

BIRDING IN CRAWFORD BAY



At the north end of the largest bay on Kootenay Lake, near the small settlement of Crawford Bay, there is a little-known wetland area comprising 62 hectares, and a birder's delight.

A map on the back shows how to walk into the Crawford Bay Wetlands, either from Peter's Road or from the beach road.



Two creeks flow into the shallow north end of the bay, Beaver Creek on the east and Crawford Creek on the west. The creeks and the flat floodplain between them provide a varied habitat for many species of birds and mammals. From Peter's Road the path winds beside a large beaver pond, and beaver dams may be seen farther along towards the lake.



Mammals that may be encountered include beaver, river otter, elk, deer, coyote, mink, and muskrat. Bears, cougars, and moose are also infrequent visitors. Keep small children close by.

Please keep dogs on a leash, especially during breeding and nesting season, from April until mid July. There is space for dogs to run off-leash on the airstrip and west beach, however please keep your dog in sight and under control at all times for the safety of wildlife and enjoyment of others.

For more information about the East Shore of Kootenay Lake, check out the website www.kootenaylake.bc.ca , inquire at any of the shops, or visit the Visitor Information booth in Crawford Bay. For bird pictures and songs, visit Dendroica-NatureInstruct on the web.

If you can add to our species list, let us know! Email sightings to info@kootenaylake.bc.ca

